

## PARKING ISSUES IN & AROUND ST JOSEPH'S SCHOOL

Police from Stanthorpe Road Policing Unit are working in conjunction in with St Joseph's School and the wider community to promote safer and appropriate parking habits at school drop-off and collection times. These peak times are hectic, stressful and potentially dangerous for all road users including your children. Parking around the school is designed to reduce traffic congestion and more importantly, keep your children safe when travelling to and from school whether by car, foot or pedal.

**Bus zones** are clearly marked with signs. Parking (even briefly) within these zones is prohibited between the restricted hours. Parking in a bus zone may attract a penalty of \$53.



There are designated parking zones on Corundum Street (near pedestrian crossing) and on High Street (opposite Corundum St) that is intended for **passenger set-down and pick up**. Between 8am-9am and 3pm-4pm on school days, parents should remain with their vehicle and move forward in the queue. Leaving your vehicle or failing to move forward may attract a penalty of \$53.



Drivers should also be aware that they **cannot turn right** from Davadi Street into High Street during school zone times (7a-9a & 2p-4p). The same applies to turning right from Corundum Street into High Street. These restrictions were applied by Council a few years ago to ease congestion and create safer roads for motorists and pedestrians. Turning right from these intersections may attract a penalty of \$106.



Parents should never **double park** when dropping off or collecting children from school, even for a short period of time. In most cases, your children can walk the extra few steps to school from an appropriate carpark. Double parking creates traffic congestion, increases the likelihood of a crash and puts pedestrians at risk of injury. Double parking may attract a penalty of \$53.



For those parents who like to collect their children from the back gate of the Primary School campus, remember parking is restricted on the northern side of **Connor Street** (across the road from the school) between 7a-9a and 2p-4p on School Days. This restriction was implemented by Council because of the narrowness of the road restricted larger vehicles like buses from passing if vehicles were parked on both sides of the road. This offence may attract a penalty of \$53.



Parents and students should cross the roads at the **designated school crossings** which are controlled by crossing supervisors. These crossings are the safest locations and assist with traffic management. Students of all ages, from Prep to Year 12, are expected to use these designated crossings. Parents should also get into the habit to cross here, as it sets a good example to the children but also creates a safer environment and more fluid traffic flow.

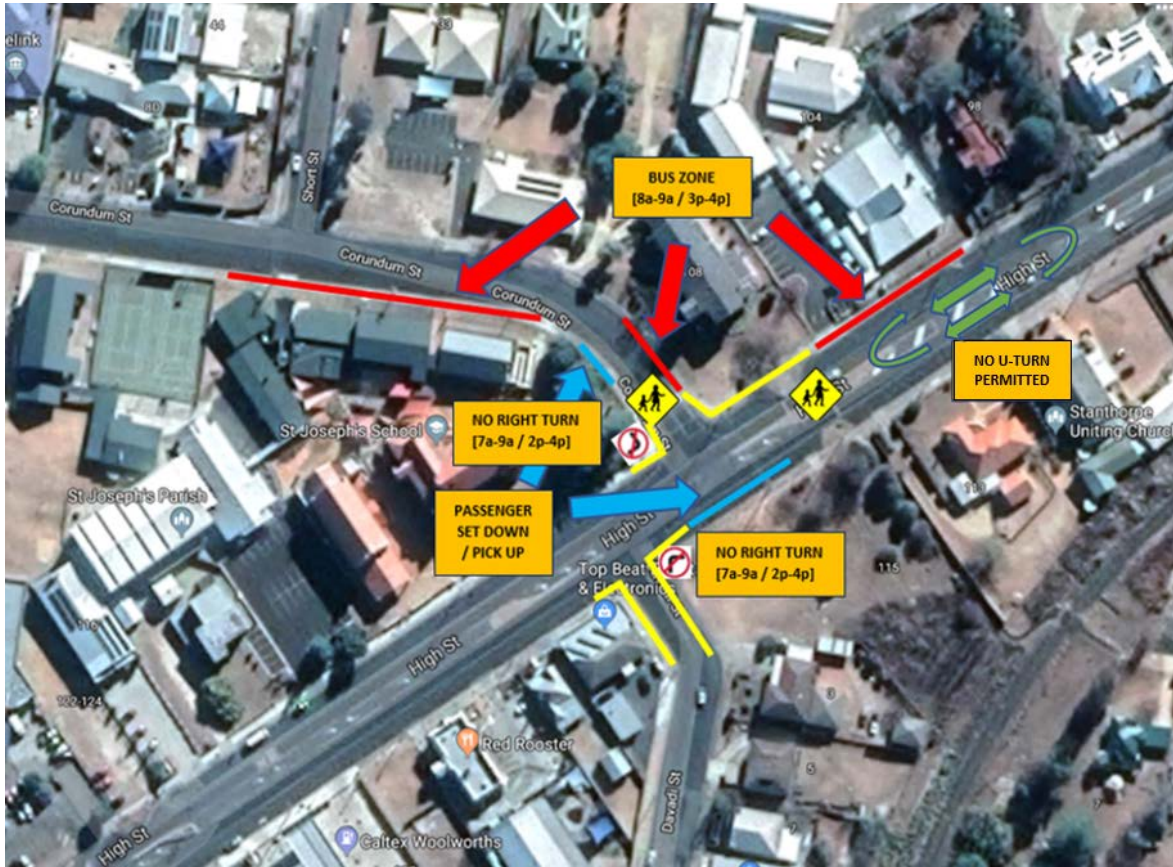


Do not park where a **yellow line** is painted on the road. This applies to not only the area around our schools but throughout Queensland roads.

A **U-turn** is **NO LONGER** permitted on High Street due to new line markings to include the bicycle path. The single unbroken centre line marking means you can cross it, but only to leave the roadway. For example, if you are heading northbound, you may turn right, cross over the centre line and enter the Uniting Church carpark. Alternatively, heading southbound, again you can cross the centre line to park in Better Way to Print carpark. You **CANNOT** conduct a U-turn or cross the centre line to park on the opposite side of the street. This offence may attract a penalty of \$240 and 3 demerit points.

Police understand that parking is limited and difficult at these peak school times. However, with a little more planning and thought, you can park safely and still be sure your children get to school on time. It is generally a result of lethargy or poor time management that drivers park inappropriately. There is nothing stopping parents from parking correctly, and then getting out of the car to personally drop-off or collect their children from the front gate.

Police from Stanthorpe Road Policing Unit will be conducting enforcement of these areas throughout the year. Please ensure you abide by parking regulations and assist us with the safety of your children and other students. Any further questions relating to this issue can be directed to myself at Stanthorpe Road Policing Unit on 4681 6400. Thank-you for assistance.





Sergeant Daniel O’Dea  
Stanthorpe Road Policing Unit